



# FALCON 3100

## STABILIZED MAST

• Plug and play stabilized mast allows clear video at a 20 ft vantage point.



## LIMITLESS INTEGRATION

• Full integration with any world-class cameras, sensors, and video management software.

## FAST & SIMPLE DEPLOYMENT SYSTEM

• Simple tool-free deployment, powered mast, and single-switch operation.



## SELF-SUSTAINING HYBRID POWER SUPPLY

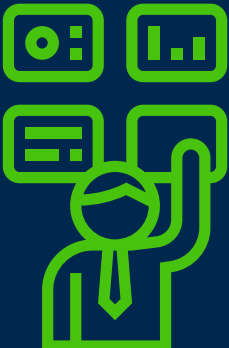
• Smart hybrid power system with battery, solar, and optional autonomous back-up Honda generator.



## ADVANCED INTERACTIVE DASHBOARD

• The most advanced interactive dashboard for mobile surveillance solutions on the market.

## ADDED VERSATILITY WITH A SMALLER PROFILE POWERFUL PLATFORM



The Falcon 3100 is a compact high performance mobile surveillance platform with the industry's most exceptional engineering.



651-434-2333

250 Lothenbach Ave, West  
St Paul, MN 55118  
mobileprosystems.com



## SPECIFICATIONS



### TRAILER

- Travel: 122" x 67" x 101" (LxWxH)
- Deployed w/o solar: 80" x 72" x 20ft
- Deployed with solar: 94" x 116" x 20ft
- Gross weight rating: 2200lbs
- 4 adjustable outriggers
- Removable tongue
- Heavy duty tube steel frame
- Industrial powder coat finish
- 3500# Torsion Axle w/ 15" wheels
- DOT Compliant



### MAST

- Exclusive Mast Stabilization System
- 20ft 3-section telescoping mast
- 10 flexible Tool Free mounting locations
- Top Mast – 6 Ethernet | 3 Power | 2 Control
- Mid Mast – 3 Ethernet | 2 Power | 3 Control



### POWER

- 900AH AGM Battery System
- Optional Honda Gasoline Generator
- 110 VAC Shore Power Input
- 960W Solar Array
- Dashboard Monitored and Controlled Circuits
- Flexible 12V and 24V Adaptable Outputs
- 150W 110VAC Pure Sine Wave Output



### AUTOMATION

- Interactive Scheduling
- Audio Enabling
- Event Triggering
- Remote arm and Disarm
- Autonomous Generator
- Thermal Controlled Enclosure



### SECURITY

- Dual-Locking Door Handles
- Removable Tongue
- Removable Outrigger Handles
- Door Open Sensor
- Impact Sensor
- GPS w/ Geo Fencing



### MPSTATUS DASHBOARD

- Advanced MPStatus dashboard application provides interactive SMS and email notifications, health stats, and full control of your system's integrated technologies.

## OPTIONS

### CAMERAS

- PTZ | 360° | Fixed | Thermal | ALPR

### RECORDING

- On-board Video Storage
- Integration with most VMS
- Full Remote Access

### COMMUNICATIONS

- Cellular | Mesh/PTP Network | WiFi
- Satellite | Copper | Fiber

### DETECTION DEVICES

- Camera Analytics | PIR | long range | Microwave | Dual Motion | Radar | Lidar | Wireless | Gunshot Detection

### DETERRENTS

- Top Mast Strobe | Body Strobe | Sirens | Horns | Two-way Audio

### LIGHTING

- IR | LED Flood | LED Strobes



651-434-2333

250 Lothenbach Ave, West  
St Paul, MN 55118  
mobileprosystems.com